

# Athletic Handbook



**St. Paul Lutheran School**

**2023-2024**

## **Greetings from the Athletic Director**

Just as St. Paul Lutheran School has a rich heritage as an academic institution, our school has also been blessed with an outstanding athletic tradition. My challenge, to both parents and athletes, is that you use the opportunity athletics provides to glorify Christ and build each other up in our faith.

The foundation of our athletic program is not to win games at any and all costs. Instead, we strive to follow the attitude Jesus exemplified to his disciples and to the people he taught. When they ask the question, "How can we be great?" The answer is we must serve one another. We serve our teammates! We show service to our opponents, and to anyone we encounter as representatives of St. Paul Lutheran School. A group of athletes dedicated, disciplined, and concerned about each other; having faith and trusting first in our Lord and also in our teammates is the foundation of our program. This is the attitude we follow.

We pray that our program will be a blessing to you. We hope that you will be actively involved by participating in our Recreation Committee and by attending as many of your child's games as possible.

In Christ's Service, Mrs. Andrea Dent

*If you have questions or concerns, please feel free to contact me at: [Andrea.dent@stpaulbaycity.org](mailto:Andrea.dent@stpaulbaycity.org)*

## **St. Paul's Recreation Committee**

As a parent/guardian of one of our athletes, you are automatically a member of our organization. The Recreation Committee's purpose is to "encourage, promote and help support" St. Paul's teams and athletic program. In doing this, we find ourselves involved in a number of activities.

With the proceeds of our major Fundraiser the Recreation Committee:

- Pays the referees for our games.
- Pays all tournament entry fees.
- Provides physical education and athletic equipment.
- Purchases all team uniforms.
- Purchased lawn mowers for the school grounds.
- Maintains the school grounds by mowing the lawn.
- Maintains the gymnasium and athletic fields.
- And much more!

Sound like a lot? It is! Without a doubt, our athletic program relies heavily on its Recreation Committee. In turn, the Recreation Committee relies heavily on the parents to help. Your time and talents make all of this possible.

We would like to say “Welcome to the Team!” We are really looking forward to a year of fun and fellowship with each other as we work to support our athletes.

### **Statement of Belief (Re: Human Sexuality)**

St. Paul Lutheran School upholds the sanctity of human life. We acknowledge what the Bible teaches regarding creation of men and women. We believe that God created all humans either male or female. For a more thorough explanation of our beliefs please see the “Statement of Belief” in the Parent Handbook.

### **Philosophy of Athletics**

The athletic program at St. Paul Lutheran School is an extracurricular part of the total learning experience offered to the students of St. Paul. Through athletics, we aim to assist the parents in developing their child into young Christian athletes. This is accomplished by teaching such principles as sportsmanship, teamwork, discipline, fair play, and self-sacrifice. The atmosphere of the athletic experience should be God-pleasing with athletes, coaches, and fans striving to be Christ like in their actions.

### **Code of Ethics for Coaches**

Coaches are a role model for the type of person we want athletes to be.

Specifically, St. Paul Coaches:

1. Demonstrate maturity so that all actions, language, emotions and conduct will be respected.
2. Treat players and opponents with respect.
3. Inspire in the athletes a love for the game and the desire to compete fairly.
4. Discipline those on the team who display unsportsmanlike behavior.
5. Respect the judgment and interpretation of the rules by the officials.
6. Nurture and guide the athlete so they can reach their full potential.
7. Build athletes up and never tear them down.

***Iron sharpens iron, and one man sharpens another. [Proverbs 27:17](#)***

### **Code of Ethics for Parents**

In general, parents need to be supportive of their children's efforts. Specifically, St. Paul Parents are expected to:

1. **Support their athlete's commitment to the team by requiring that their athlete attend all practices, games and tournaments. If a fee was paid and your child(ren) does not come, you will be billed for the return of that fee.**
2. Volunteer as much as possible. In order for our athletic program to be successful, volunteers are needed for home games, tournaments, transportation, and many other activities.
3. Receive authorization from the coach prior to attending practice for any sport.

4. Contact the coach, not school office, by telephone or written note any time their child will not be at a practice or a game. If this does not occur, the athlete's absence will be considered an unexcused absence.
5. Understand that athletes may receive disciplinary actions for being late, being without equipment or shoes, or having an unexcused absence.
6. Be prompt in picking up their child(ren) after practices, games, and tournaments. Many families are more than willing to assist in a needed situation or set up a carpool schedule.
7. Support the coach(es) in the presence of their children. Undermining a coach's authority is harmful to the team and your child.
8. If a person's actions in the stands become distracting to an athlete, the coach has the option to pull that child out of competition.
9. Coaches are not compensated for the time and effort they put into each season, so please take time to thank the coach for their hard work and dedication.

***Train up a child in the way he should go; even when he is old he will not depart from it.***

**[Proverbs 22:6](#)**

### **Code of Ethics for Parents/Spectators**

Parents/spectators are an important part of the game and should at all times conform to accepted standards of good conduct and sportsmanship:

1. Respect all officials, coaches and players at all times.
2. Be enthusiastic. Positive cheering is encouraged.

3. Booing and disrespectful remarks are unacceptable at all times. If at any time disrespectful behavior becomes a distraction, those spectators may be asked to leave the event.
4. It is never acceptable to coach your child or other athletes from the stands. Coaching from the stands is a distraction and can cause confusion for the athletes. Leave the coaching to the coaches.

***Do not let any unwholesome talk come out of your mouths, but only what is helpful for building others up according to their needs, that it may benefit those who listen. Ephesians 4:29***

### **St. Paul Lutheran Athletes**

Participation in athletics at St. Paul Lutheran School is a privilege and not a right. When an athlete behaves in a God-pleasing manner, she/he earns the privilege to participate. Each, by example, touches the lives of everyone from teammates and coaches to the spectators in the stands. By performing in any competition, a St. Paul Lutheran athlete has the opportunity to allow God to shine through them. As a result, the athlete becomes a witness, for all those in attendance, to what the power of God can do.

***Dear children, let us not love with words or tongue but with actions and in truth. 1 John 3:18***

### **Code of Ethics for Athletes**

- Attend all practices and games, unless excused by the coach.
- Purchase/acquire equipment such as shoes, kneepads, shin guards etc.
- Hand in all uniforms to the school office promptly after the last game of each season.
- Be responsible for the care and cleaning of their uniform.  
Charges will be assessed for any uniforms not returned and/or

damaged. Final report cards are held until uniforms are turned in or charges have been paid.

- Treat opponents with respect.
- Play hard, always within the rules.
- Exercise self-control at all times, setting an example for others to follow.
- Respect officials and their decisions.
- Encourage teammates at all times, and maintain a positive attitude.
- St. Paul has a mandatory dress code for athletes in season. On game day, athletes should stand out from the rest of the student body. Boys are to wear khaki pants, button-down dress shirt with collar or a polo shirt. Girls are to wear dress pants, khaki, skirts or dresses of appropriate length with a polo shirt or top.

We give God the glory for the abilities he has given to us, the success we achieve, and for our victories.

***Whatever you do, work at it with all your heart, as working for the Lord, not for men, since you know that you will receive an inheritance from the Lord as a reward. It is the Lord Christ you are serving. Colossians 3:23-24***

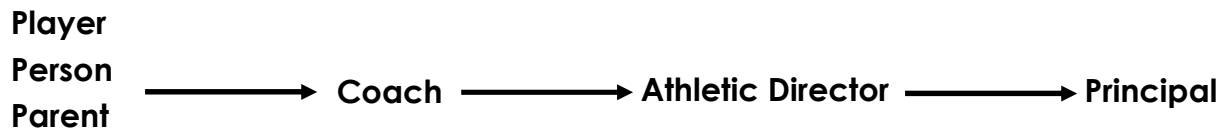
### **Conflict / Resolution**

If a conflict should arise during a sport season, whether between players, player/coach, parent/coach, or any two individuals, we here at St. Paul Lutheran School will follow these guidelines from Matthew 18.

The following procedure will be used for all concerns and complaints:

1. An athlete, parent or coach with a concern or complaint should first try to resolve the matter directly and informally with the individual(s) concerned.
2. If the matter cannot be resolved informally at the initial level, the complainant should contact the Athletic Director and express the complaint, either verbally or in writing. After reviewing the steps taken by the complainant, to solve this problem informally, the athletic director will investigate the facts and meet with the individual(s) involved to determine if the problem can be worked out among the parties involved. The solution will be communicated back to all parties, either verbally or in writing.
3. If the complainant feels the solution is not acceptable, the complainant should contact the school and set up a time to meet with the athletic director and the principal to express the complaint. A resolution at this point will be determined by the athletic director and the principal. The decision of the complaint shall be communicated to all parties involved by a face to face meeting with the athletic director and the principal.

### **Resolution Procedure**



***Blessed are the peacemakers,  
for they will be called children of God. Matthew 5:9***

### **Eligibility Policy**

At St. Paul Lutheran School, academic studies come before athletics. If a student works hard in the classroom, we feel that they are also more likely to work hard as an athlete. Therefore, they are eligible to participate in all team gatherings. If a child does not



meet academic requirements, they are ineligible to participate in any team gathering for the period of their ineligibility. This is done so that they may focus on their academics.

In order to participate in athletics a student must be putting forth satisfactory effort. Failing grades (less than 60%) or lack of concern for academic performance are some evidences of unsatisfactory effort in the areas of academics. Inappropriate classroom behavior, excessive checks/warnings for disturbances or disrespect or removal from the classroom are some things that give evidence of unsatisfactory effort in the Christian behavior and growth. If a child is ineligible, he/she may not play sports or go to practices until they become eligible again. After one week the child's grades are reevaluated to see if he/she has improved his/her grades to become eligible. If grades have not improved, they remain ineligible for the next week. If they become eligible again, they may resume going to practices and playing on their sports team(s). If extenuating circumstances arise, the final decision lies with the Athletic Director and Principal.

### **Physical**

Before an athlete can participate in any sporting event (practices or games), they must have a current physical on file with the school. Physicals are good for one year from the date it occurred.

### **Absentee Eligibility**

A student must be in school for 1/2 of a day to be eligible for that evening's sporting practice or sporting event. There may be special circumstances in which a student may miss a majority of school in a given day. In these instances, please express your situation with the athletic director and a fair decision will be made. (e.g. special doctor/dental appointments or funerals)

### **Scheduling**

St. Paul Lutheran Church and School is first and foremost a worshiping community. All student athletes, parents, teachers, staff, and coaches are encouraged to attend corporate worship when it is available at St. Paul. For that reason, no athletic events, including competitions or practices, will be scheduled during worship services (even when said service is duplicated and offered at different times).

### **Bay-Midland Lutheran League**

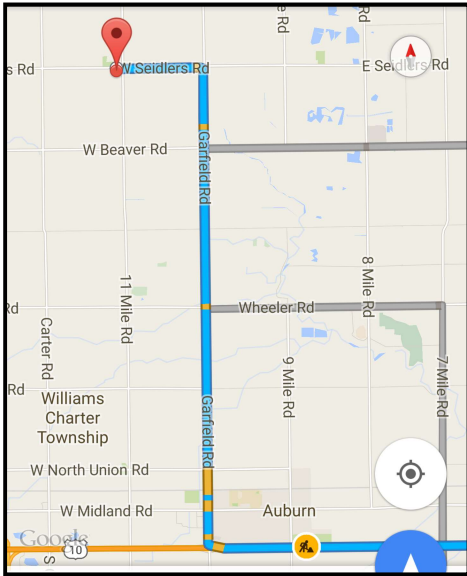
St. Paul is a member of the Bay-Midland Lutheran League. The league is made up of 7 parochial area schools.

The schools are:

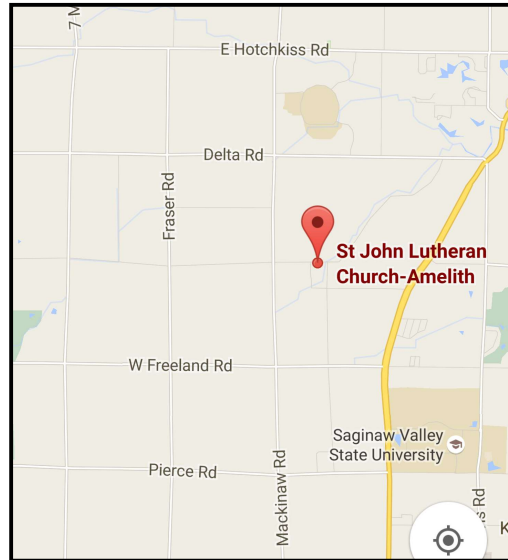
- St. Paul Frankenlust
- St. John Amelith
- Zion Bay City
- Zion Beaver
- St. John Midland
- Auburn Area Catholic (B-teams only)
- Bay City Immanuel

The league offers the following sports:

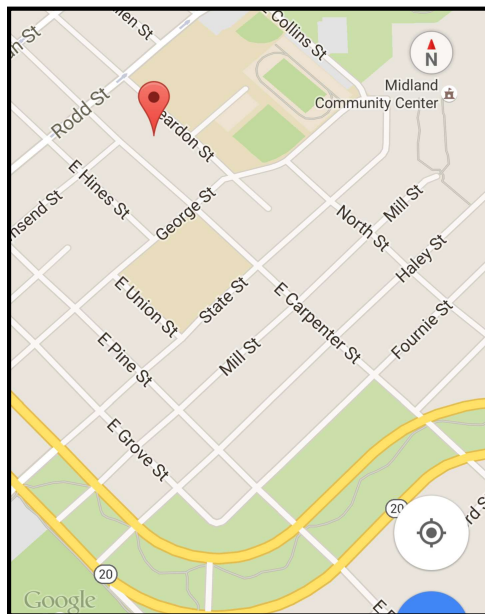
- Co-ed Soccer
- Co-ed Volleyball
- Boy's Basketball
- Girl's Basketball
- Peewee Basketball
- Co-ed Track
- Co-ed T-Ball



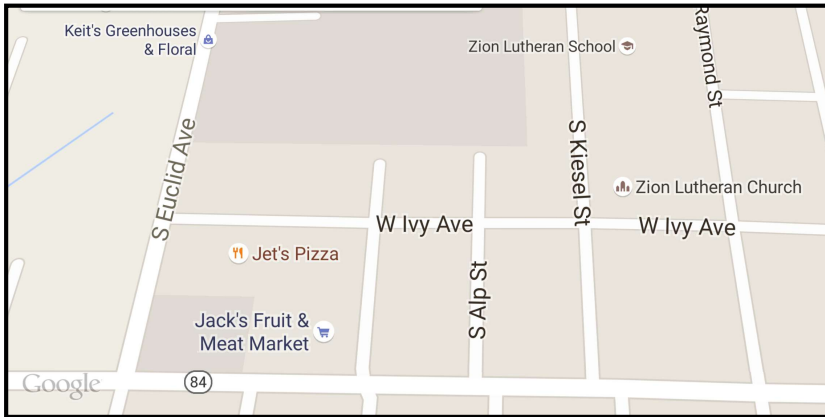
**Zion Lutheran School**  
1557 Seidlers Rd  
Auburn, MI 48611  
(989) 662-4264



**St. John Lutheran School**  
1664 Amelith Road,  
Bay City, MI 48706  
(989) 686-0176



**St. John Lutheran School**  
505 E. Carpenter Street  
Midland, MI 48640  
(989) 835-5861



**Zion Lutheran School**

1707 S. Kiesel Street

Bay City, MI 48706

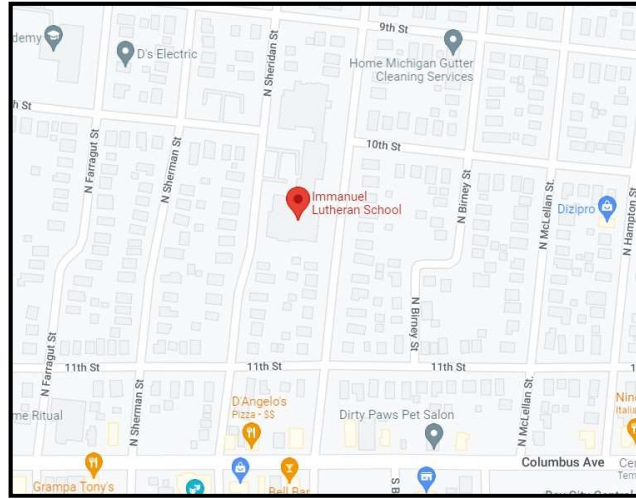
989-893-5793

**Bay City Immanuel**

247 N Lincoln St.

Bay City, MI 48708

(989) 893-8521



**Auburn Area Catholic School**

*(St. Anthony's Gym)*

4699 11 Mile Road

Auburn, MI 48611

(989) 662-6431

